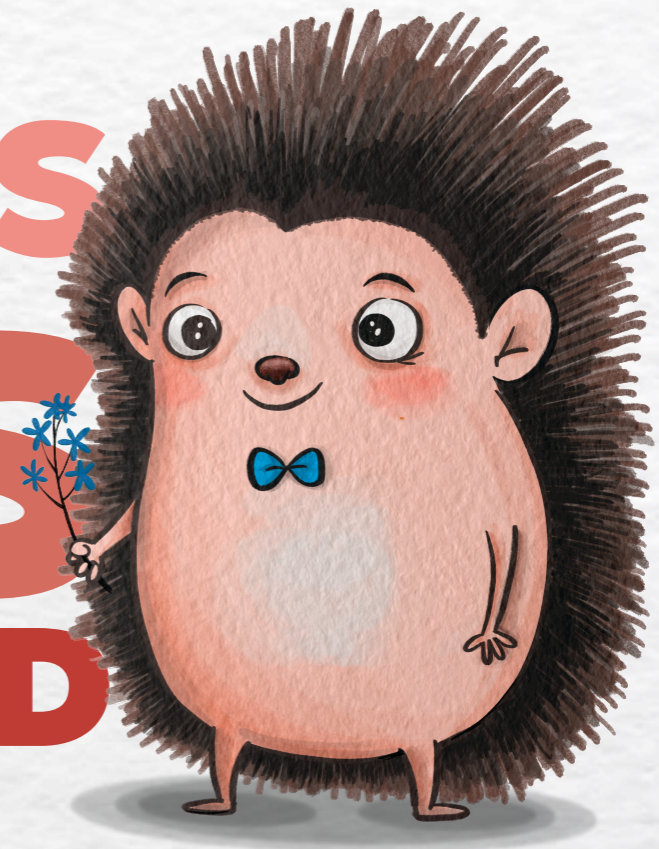


PRESBYTERIAN PRESCHOOL SERVICES

**little blessings
for
little ones
EDUCATION FUND**



A Strong Foundation in Truth, Beauty and Goodness for Every Child



Presbyterian Preschool Services started in 1974 under the entity of Presbyterian Community Services to provide affordable preschool programmes. Our first centre was Heng Teck Kindergarten at Blk 113 Bukit Merah View. Today, under the current entity, we have 11 childcare centres across the island with 800 children capacity. As a charity organisation, we provide support for children from low-income families and for children with Special Needs/Disabilities. Such charity needs support from individuals and communities so that these children can have a strong foundation.



The Little Blessings for Little Ones is an education fund to motivate and support children from needy families to grow and glow in our centres. This funding will cover in part or in full the following which are considered to be essentials in having a strong foundation in their early years development.

This education fund will help to cover the following expenses:

- **General Education**
- **Educational Support**
- **Family Support**

GENERAL EDUCATION

- **Basic Monthly School Fee:** The Basic Monthly School Fee covers the cost of the basic curriculum. Funding support for school fees will be considered after any Additional Subsidy available to the child from the government or charity organisations. The actual **amount varies** from child to child.
- **Education Pack:** Education Packs are learning resources that children can bring home to do with their parents. This additional engagement reinforces the learning that has taken place in the school. Items in the education pack includes simple music instruments and readers. The total cost of the Education Pack per year is about **\$100** per child. The cost of this education pack is not included in the basic monthly school fees as it is an optional item. It is made optional because some children may have these resources at home already.
- **School Learning Journey:** School Learning Journeys/Outings allow children to learn beyond the classroom walls. It makes learning come to life and help children understand how knowledge is translated to action in the real world. This cost of the outings are not included in the basic school fees. Parents can opt out of the outings and children will then remain in school during such outing periods. There are about 3 outings a year for the child. The cost of each outing is about **\$30**. This amount covers transport cost, resources and entrance fees, facilitator fees and refreshments.

EDUCATIONAL SUPPORT

- **Development Support and Learning Support:** The DS-LS Programme supports children who require low levels of Early Intervention support. The Programme provides targeted developmental and learning support for the children. The Programme is partially supported by the government with mean-tested out-of-pocket fees from parents. In addition, PPS needs to raise **\$400** per child to receive this 10-week support programme.
- **Special Needs Support:** The Educational Support Programme provides a natural environment for children with special needs to learn, play, socialise and grow alongside with regular peers. This is done through close collaboration between our preschool teachers and Special Needs Trained Educational Support Teachers. PPS needs donation of **\$300** per child per month to cover the cost of the Programme.

FAMILY SUPPORT

- **Family Support:** Some of our children need additional family support to help them through their preschool years. This include payment for medical treatment, simple stationery at home, and a little birthday/Christmas gift. The actual **amount varies** from child to child.

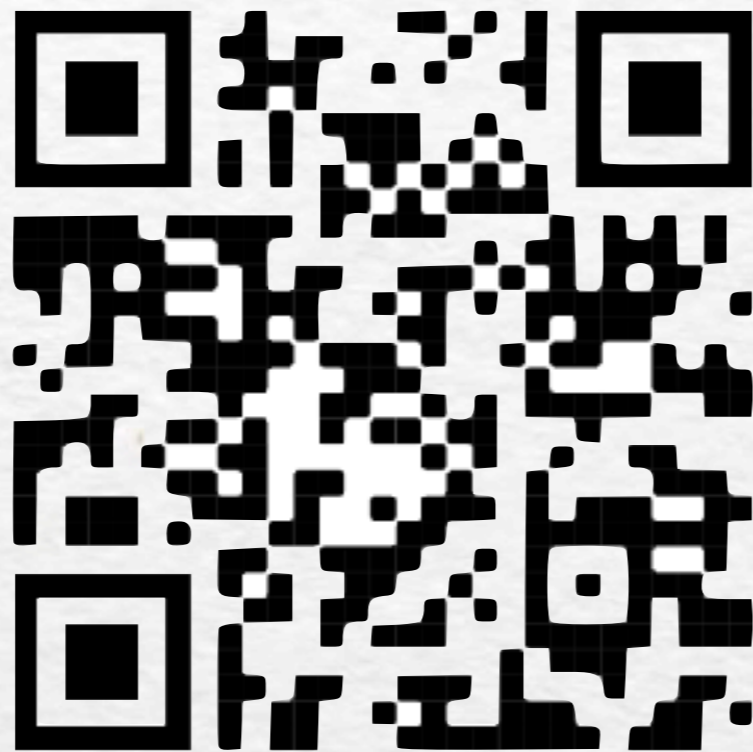
How Can You Help?

- 1 Make a **general donation** to the Fund allowing PPS to deploy the donation according to the needs of the children
- 2 Make a donation to a **specific area**: General Education, Educational Support OR Family Support
- 3 Sponsor a **specific child with acute needs**. In such a donation, PPS will match the donation to the needs of the child. Key information would be shared with the donor.
- 4 Sponsor a **special project** that will benefit most children. You can share with us your idea or chat with us on any special projects that we are working on currently.
- 5 **Bless the staff** who are on the ground every day blessing the children with their hard work and heart work.



DONATION CAN BE MADE AT:

<https://bit.ly/PPSLittleBlessings>



You can also write to
community@pcs.org.sg
for more information.



Or visit our website at www.presbypreschool.edu.sg